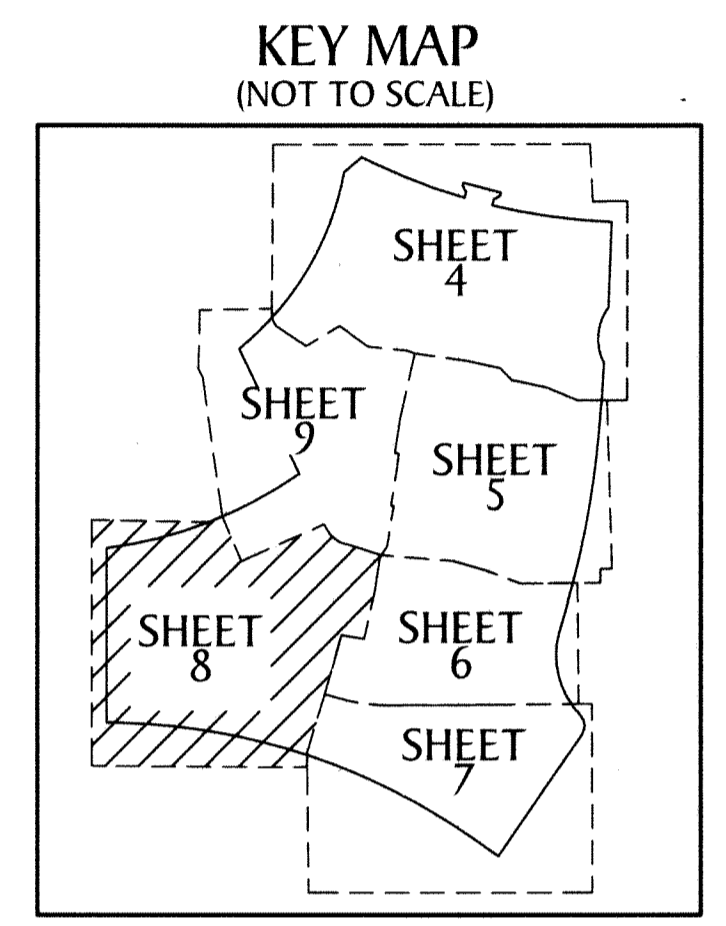


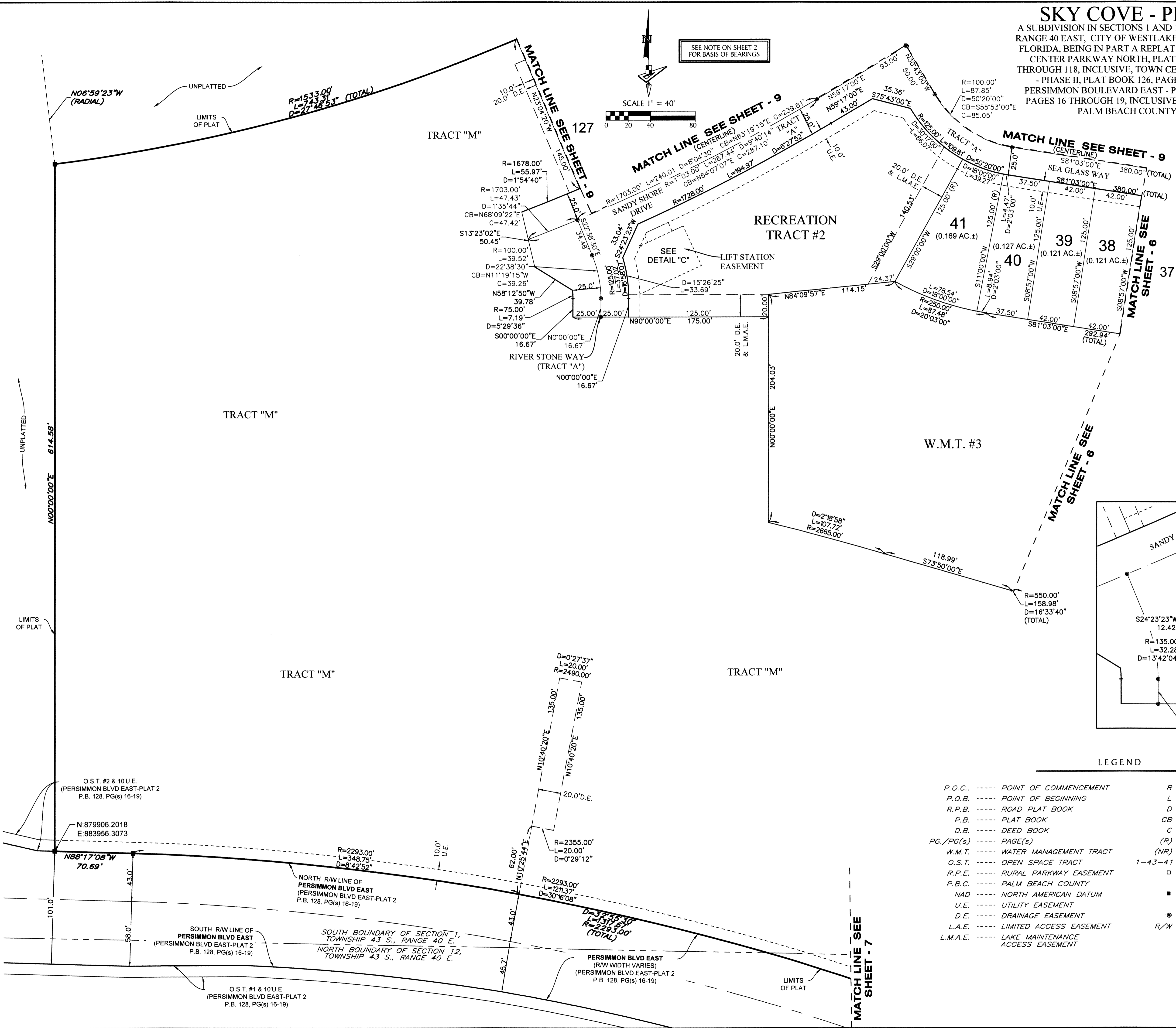
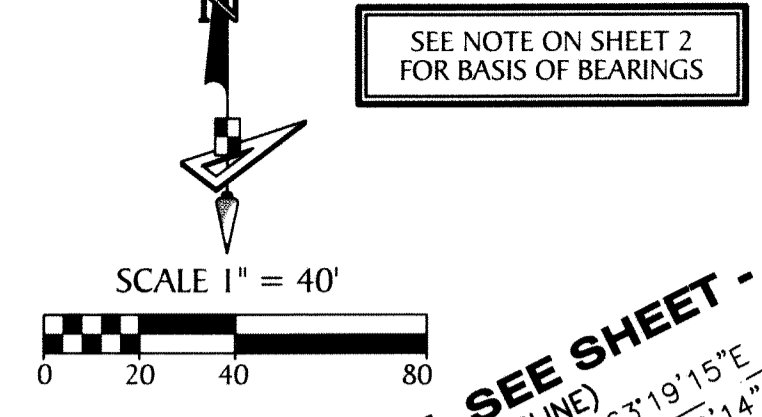
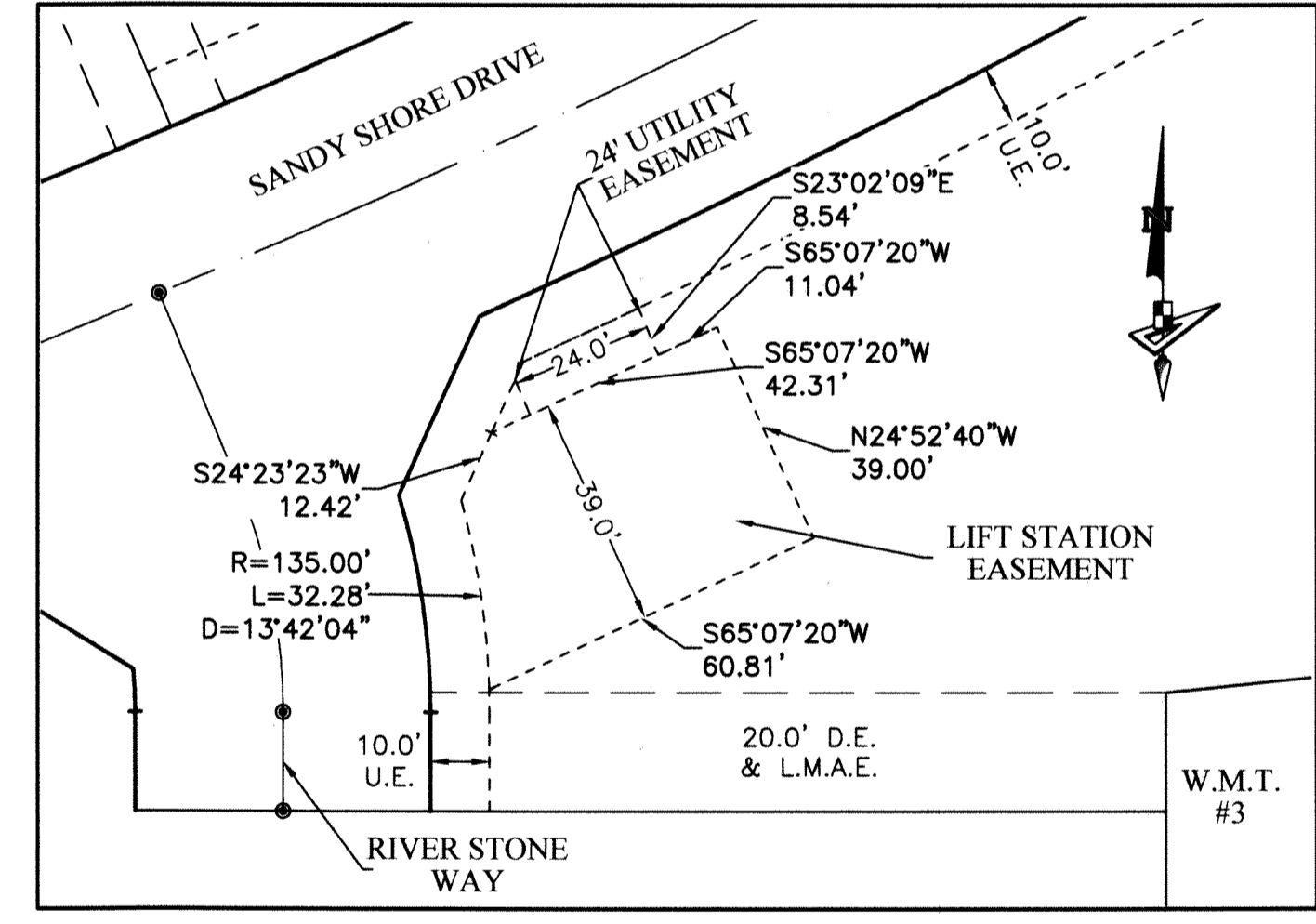
SKY COVE - PHASE 1 A

A SUBDIVISION IN SECTIONS 1 AND 12, TOWNSHIP 43 SOUTH, RANGE 40 EAST, CITY OF WESTLAKE, PALM BEACH COUNTY, FLORIDA, BEING IN PART A REPLAT OF PORTIONS OF TOWN CENTER PARKWAY NORTH, PLAT BOOK 123, PAGES 106 THROUGH 118, INCLUSIVE, TOWN CENTER PARKWAY SOUTH - PHASE II, PLAT BOOK 126, PAGES 114 AND 115 AND PERSIMMON BOULEVARD EAST - PLAT 2, PLAT BOOK 128, PAGES 16 THROUGH 19, INCLUSIVE, PUBLIC RECORDS OF PALM BEACH COUNTY, FLORIDA

136



DETAIL "C"
(SCALE: 1"=30')



LEGEND			
P.O.C. -----	POINT OF COMMENCEMENT	R -----	RADIUS
P.O.B. -----	POINT OF BEGINNING	L -----	ARC LENGTH
R.P.B. -----	ROAD PLAT BOOK	D -----	DELTA ANGLE
P.B. -----	PLAT BOOK	CB -----	CHORD BEARING
D.B. -----	DEED BOOK	C -----	CHORD
PG./PG(S) -----	PAGE(S)	(R) -----	RADIAL
W.M.T. -----	WATER MANAGEMENT TRACT	(NR) -----	NON-RADIAL
O.S.T. -----	OPEN SPACE TRACT	1-43-41 -----	SECTION-TOWNSHIP-RANGE
R.P.E. -----	RURAL PARKWAY EASEMENT	□ -----	FOUND PERMANENT REFERENCE MONUMENT
P.B.C. -----	PALM BEACH COUNTY	■ -----	SET PERMANENT REFERENCE MONUMENT
NAD -----	NORTH AMERICAN DATUM	● -----	PERMANENT CONTROL POINT
U.E. -----	UTILITY EASEMENT	R/W -----	RIGHT-OF-WAY
D.E. -----	DRAINAGE EASEMENT		
L.A.E. -----	LIMITED ACCESS EASEMENT		
L.M.A.E. -----	LAKE MAINTENANCE ACCESS EASEMENT		

GeoPoint
Surveying, Inc.

4152 W. Blue Heron Blvd. Suite 105
Riviera Beach, FL 33404

Phone: (561) 444-2720
www.geopointsurvey.com
Licensed Business Number LB 7768

Sheet No. 8 of 9 Sheets